

Product Data Sheet

BREWER'S SPECIAL

Viking Red Active Malt

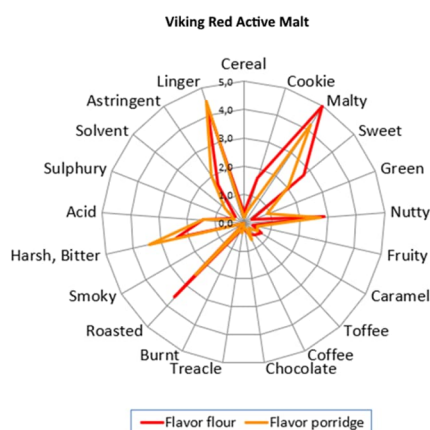


Malt character

The unique characteristics of this exceptional **barley** malt are based on a special variety and a complex malting process with a curing temperature over 100°C.

Viking Red Active Malt gives a pure malty, nutty and clean long-lasting flavor together with unique amylase activities for this color level. This is a real single variety malt for any reddish brew.

Flavor contribution



Applications

Viking Red Active Malt is ideal malt for any ales, dark lagers, festival beers and bocks for underlining malty flavors and full bodied taste, but also boosting up the red tinted colors.

The strong enzyme activity gives good potential for developing recipes with adjuncts or non-active malts. With this malt if you are heading to strong reddish color you do not need to dilute color down with pale malts. Dosage up to 100%.

Malt specification

moisture	%	max. 5.0
extract fine	% dm	min. 78.0
color	°EBC	30 – 40
FAN	mg/l	min. 130
saccharification	min	max. 20
pH		max. 5.6
protein	%	max 13.5
diastatic power	WK dm	min. 200

Other typical analysis values

DMSP	ppm	max. 2.5
attenuation	%	min. 75

Production and packaging

Viking Red Active Malt is produced in Finland.

Available in bulk, big bags and 25 kg bags.

Product Data Sheet

BREWER'S SPECIAL

Viking Red Active Malt



Storage and safety

Malt should be stored in a clean, dry, odorless and pest-free place, at a cool (on avg. <25°C) and stable temperature. Under these conditions unopened bags of malt can be stored for a minimum of 2 years from the date of bagging and unopened bags of crushed malt for a minimum 1 year from the date of bagging.

Opened bags are beyond Viking Malt's control, and we always recommend that opened bags are used at once. Anyhow, if opened bags are carefully re-sealed and then stored under the recommended conditions, they are expected to endure the storage times mentioned above.

You should always keep the malts away from hot surfaces.

Do not inhale the malt dust.

General remarks

Barley is an allergen – contains gluten. Our sites are certified according to ISO 9001, ISO 14001 and FSSC 22000.

Organic certificates are permitted locally.

No GMO raw materials are used.

Suitable for Vegan nutrition.

All the used barley varieties are tested and approved for malting and brewing.

Analysis of our malts are carried out according to EBC Analytica (or similar) when possible.

Product descriptions are subjectable to crop changes.

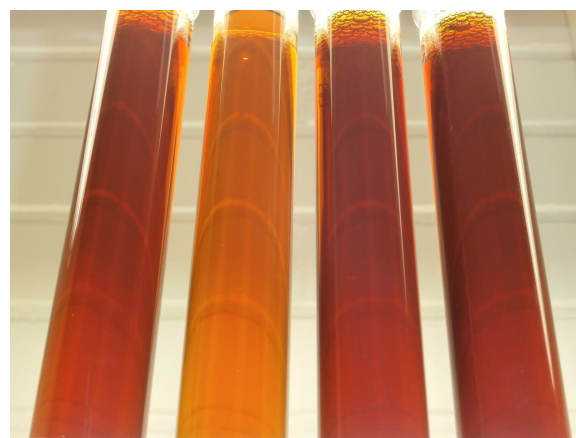
Picture: left to right 16°P non boiled worts

Viking Red Active 100%

Viking Red Active 50% + Viking Wheat Malt 50%

Viking Red Active 50% + Viking Caramel 50 Malt 50%

Viking Red Active 50% + Viking Caramel 50 Malt 30% + Viking Red Ale Malt 20%



Did you know?

Finland, malting barley is delivered directly from nearby farms to our malthouse. The average distance is only about 50 km. Farms have also their own drying equipment.

The immediate drying after harvest to the low storage moisture (< 14 %) keeps the barley vital and safe even couple of years.